

TM-8 II

CNC MULTI-AXIS SPRING FORMER with rotary tooling table

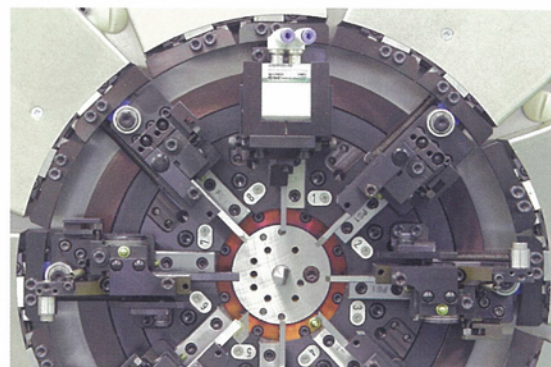
The rotary tooling system giving stable wire line is suitable for ultra fine wire forming
TM-8 has evolved into ultimate forming machine for ultra fine wire
There is no dead zone, and constant position of tooling is kept
with auto-compensation while the table is turning
MNO (Mec New Operation system) equipped controls operation, gauging and
multifunctional production management



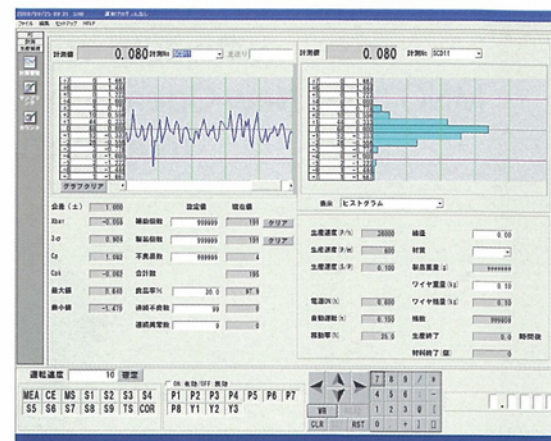
TOSAG Engineering AG
Fuchsweidweg 12, CH-4852 Rothrist
Tel. +41(0)62 794 38 28, Fax +41(0)62 794 14 58
www.tosag.ch philipp.schaerer@tosag.ch

Features

- Tooling table equipped with 8 forming slides turns around a quill in the center at high speed. Slides can be set up at any angle for coil, i.e. forming adjustment can be made easily. Furthermore, newly developed 1 motor-for-2 slides, i.e. No dead zone has been achieved by divided 16 cams. Forming work at any angle is available.
- Tool position is unchanging by auto-compensation even though tooling table turns.
- Position setup follows slide number, and no need to change drive motor number even though table rotation angle is changed.
- Employing square quill enables to make long spring part that needs certain space when it is twirled during forming process.
- 3 RR servo slides at maximum can be equipped.
- Program display controlled by "MNO" is easy-to-read, i.e. program flow, each axis operation status, input/output, jump and so on can be grasped by scrolling.
- Easy to make long program and also shorten setup time with multifunction.
- Gauging, Coil end control, Input/Output and such program screen comes on independently.



Tooling table without dead angle



Graphs and Production control items are displayed in real time.

Motor Sensor System, MSD-1 (Standard spec.)

The contact sensor functions as positioning for cut axis, pitch axis and such drive servomotor. It measures free length, outside diameter, leg portion angle in 1/1000mm resolution, and performs corrective control.

It functions as well as capacitance sensor or contact type sensor.

Machine Specifications

Wire Dia.	$\phi 0.2 \sim 0.8 \text{ mm}$		Control device	Max. 16 axes to be controlled by computer – OS Windows XP
Index	D/d 4 or more		Display	17" TFT color LC display
Twirl distance	Radius 45mm available using square quill		External memory	USB thumb drive
Slides	Body slide	1 pce	Service Temp.	0 ~ 40 °C
	Bending slide	3 pcs	Power source	AC 200V, 3-phase, 20 A
	Cut slide	4 pcs	Service Air pressure	Max. 0.5 MPa
	RR servo slide	Option 3 pcs at max.	Net weight	450 kg

